

Wired/Wireless IP Camera

Quick Installation Guide

(IE Browser)

Model: APM-J011-WS

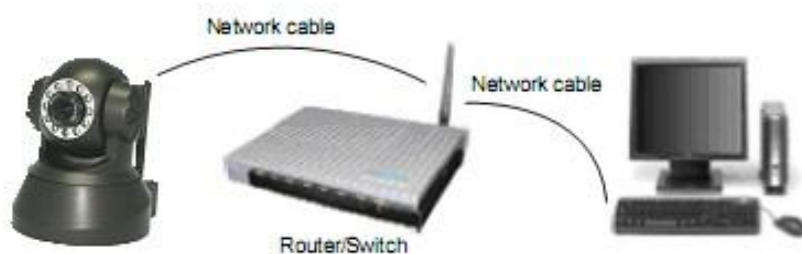
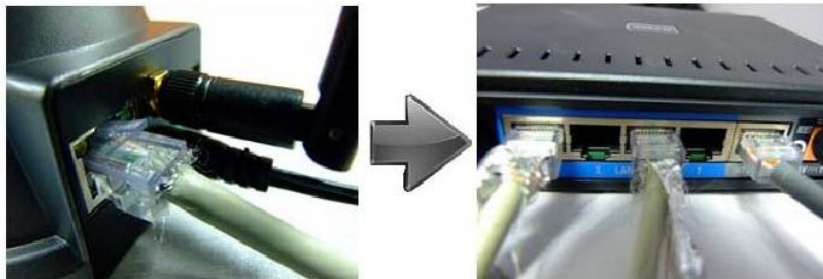


Black

White

Step 1: Hardware Installation.

1. Install the Wi-Fi antenna.
2. Plug the power adaptor into camera.
3. Plug the network cable into camera, the other side to the router/switch.



Step 2: Software Installation.



Install the follow software:

1. **IP Camera Tool:** Open the CD, click "**IPCamSetup.exe**"—"Next"—"Next"—"Close".
2. **ActiveX:** Click "**Appinstall.exe**"—"Next"—"Install"—"Finish".



After this done, the icon "IP Camera Tool" will be displayed on desktop.

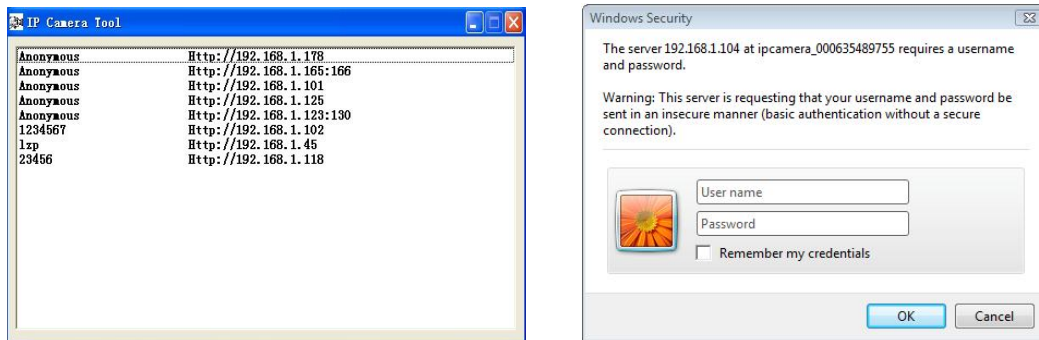
Step 3: Real-time Video Demonstration.

1. Login:

Double click “**IP Camera Tool**” icon on desktop, search the IP address, choose the one of your camera, double click to go to IE login interface.

Default username: admin

Password: no password.



2. Choose the language.

English, Chinese, Spanish, Korean, German, French, Italian, Portuguese optional.



3. Choose the work mode.

IE browser: choose ActiveX mode.

Safari, Firefox, Google chrome browser: Server push mode.

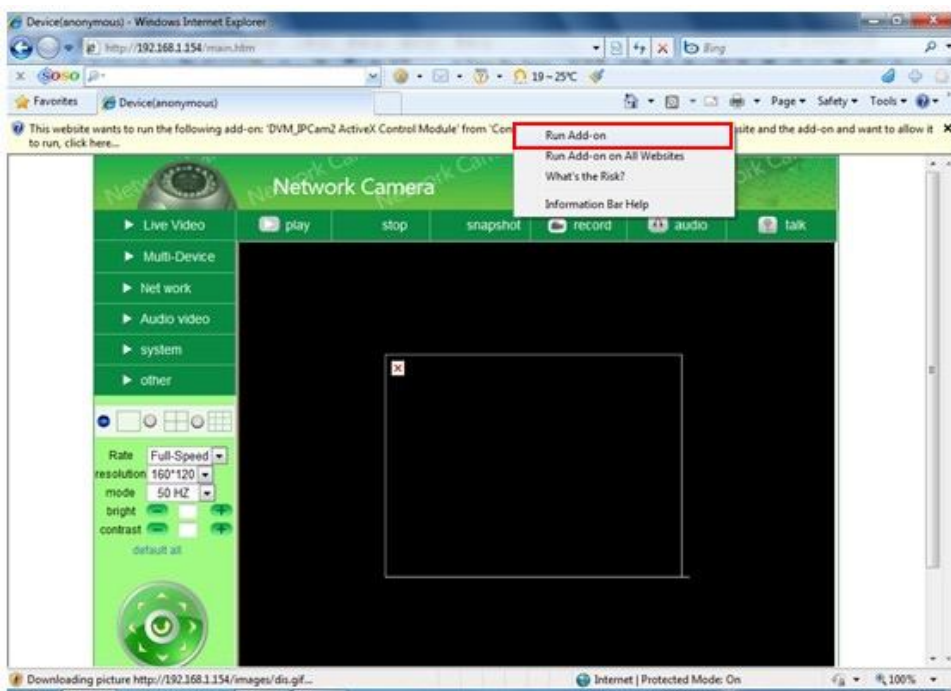
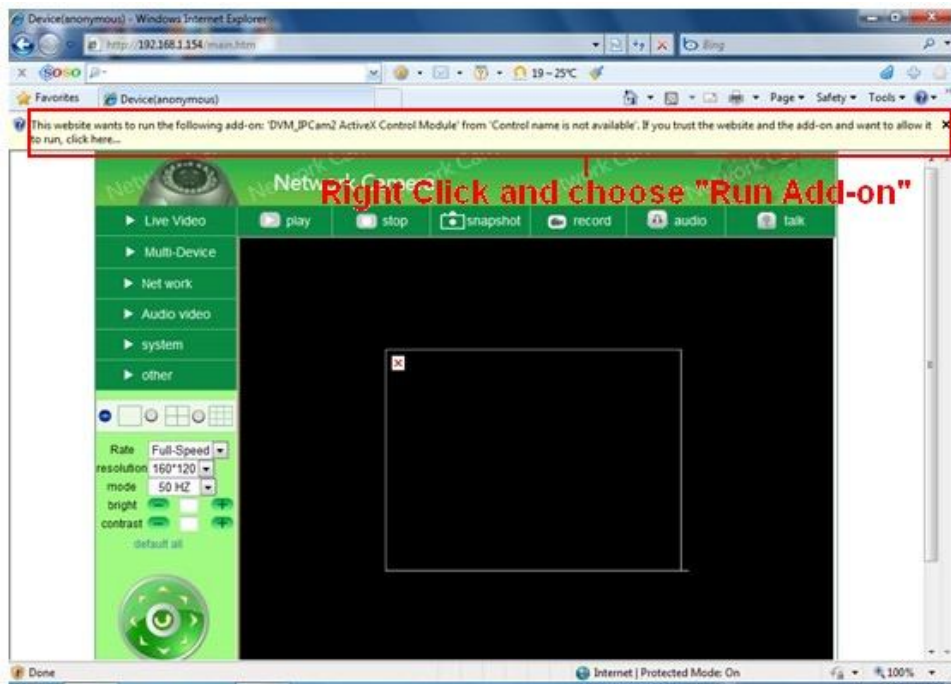
Mobile phone: sign in mobile phone mode.

4. Sign in.

Click Sign In, then can get video on real-time.

Q1: No pictures problem with ActiveX Settings for IE Browser

If use IE browser to connect the camera for the 1st time, maybe there is no image displayed, there will be an ActiveX prompt, please click the prompt and choose **Run Add-on**, refresh the IE interface, and login the camera again, then will see live video.



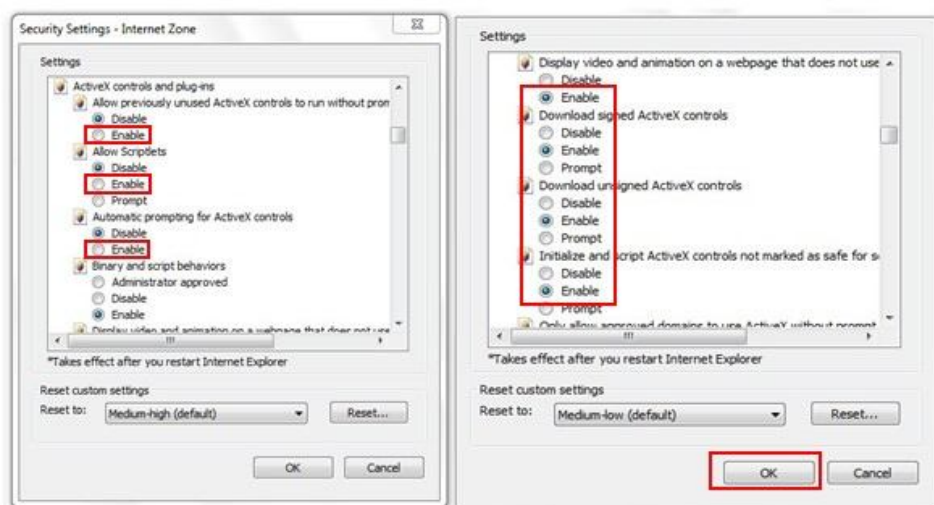
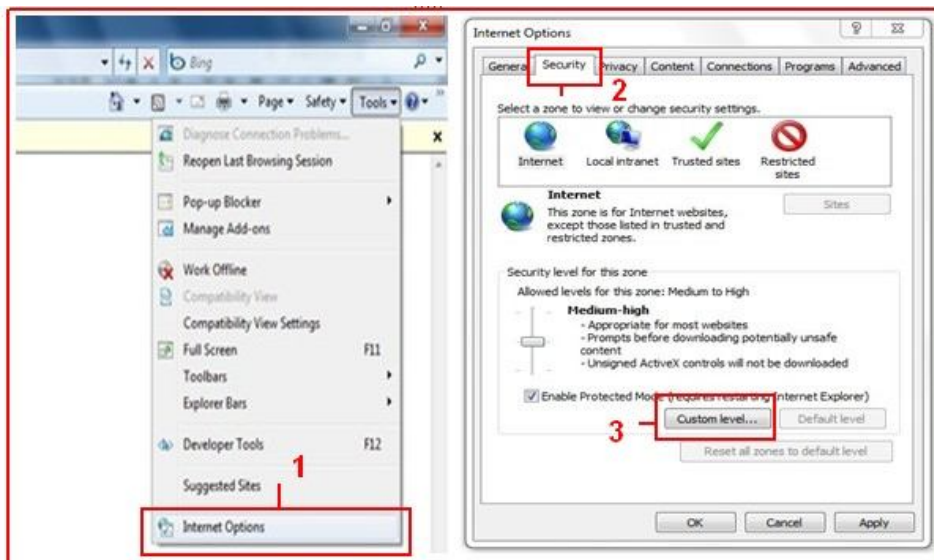
If there is still no live video after run ActiveX, please try to enable the ActiveX options of IE security settings, please do the follow steps:

1. Close the firewall of your computer.
2. Change the ActiveX settings, "IE" browser > "Tool" > "Internet Options" > "Security"> "Custom Level" > "ActiveX control and Plug-ins", all the ActiveX options set to be "Enable": Especially:

Enable: Download unsigned ActiveX controls

Enable: Initialize and script ActiveX controls not marked as safe

Enable: Run ActiveX controls and plu-ins



In

Addition: you can also click "start" menu->"Internet Explorer", choose "Internet attributes" to enter, or via "Control Panel" ->"Internet Explorer", enter to Security setting.

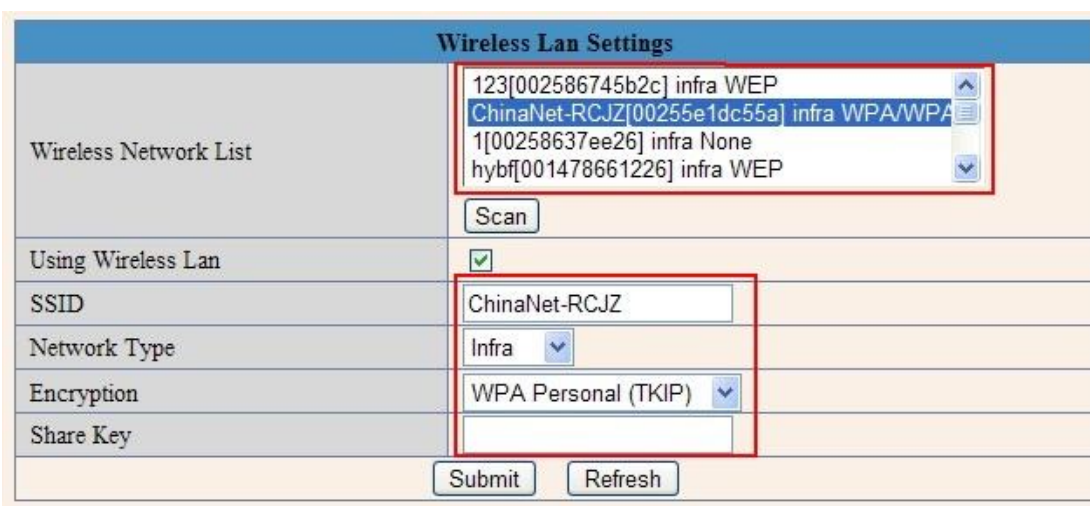
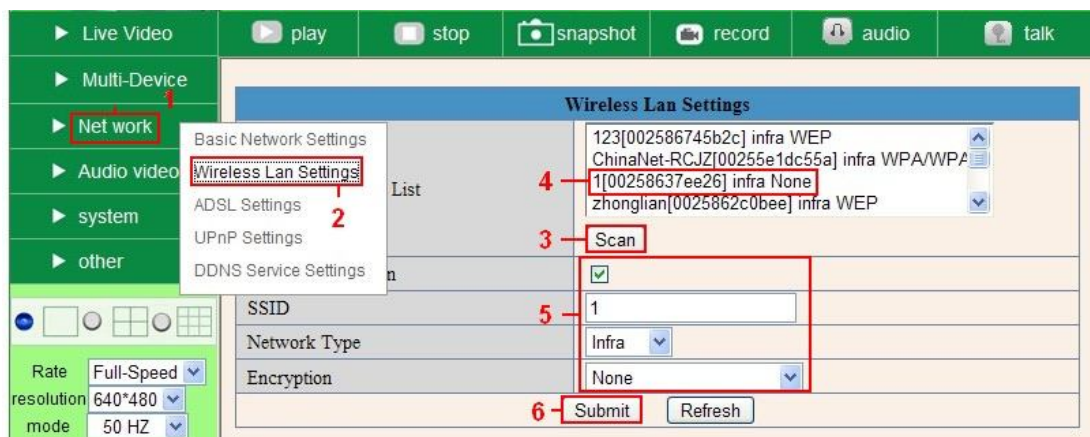
3. If there is still no image, please close your anti-virus software, and then try step 1 & 2 again.

Q2: How to do Wireless Settings

1. Make sure the router is a wireless router.
2. Make sure the Wi-Fi antenna installed.
3. Make sure whether there is encryption of the WLAN of router, if there is encryption,

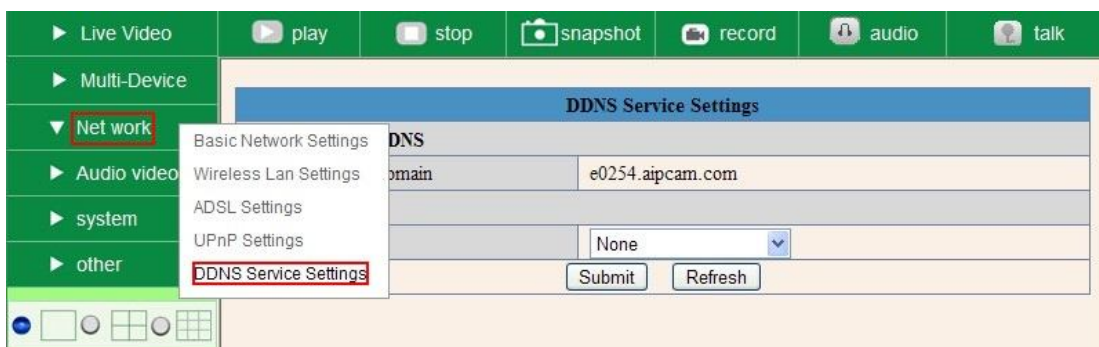
keep the key.

4. Login the camera, click “**Network**”>”**Wireless Lan Settings**”>”**Scan**”, please scan 2 times, then you will find the WLAN from the list, choose the one you use.
5. If there is no encryption, just click “**Submit**”, if there is encryption, please input the key, then click “**Submit**”.
6. Wait about 30 seconds, the camera will reboot, then unplug the network cable.



Q3: How to use DDNS

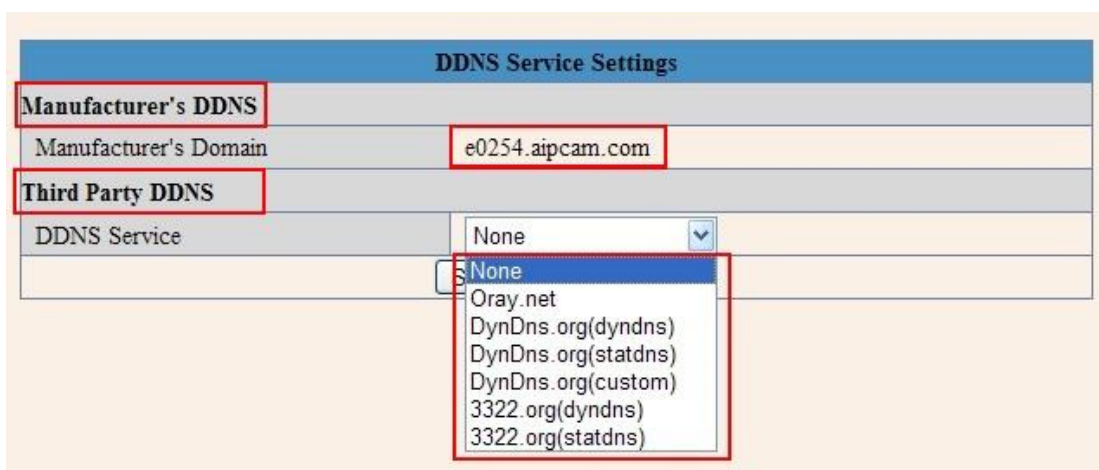
1. **Login the camera:**
Click “**Network**”>”**DDNS Service Settings**”.



2. Choose the DDNS, there are 2 options:

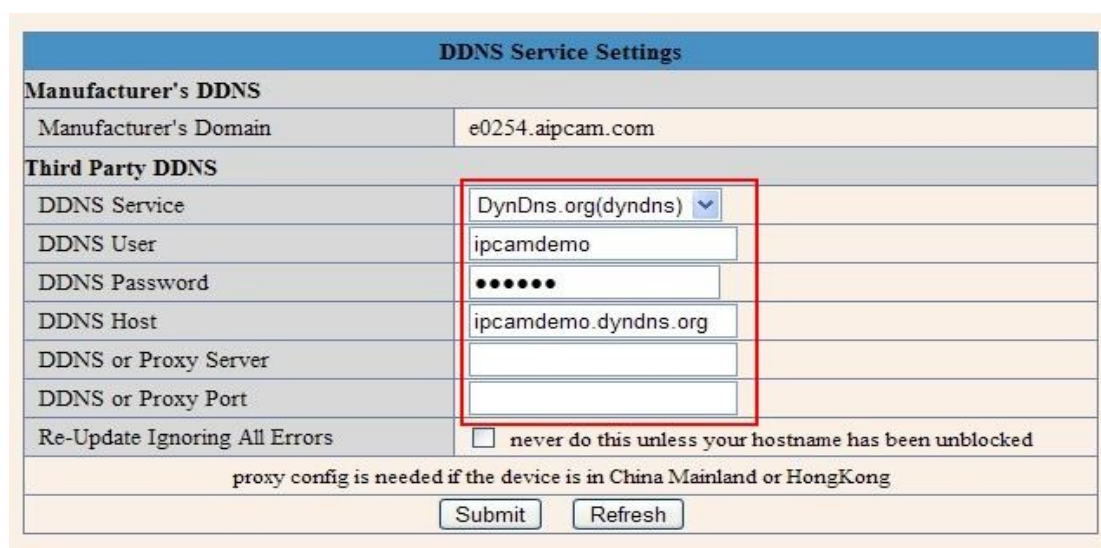
Manufacturer's DDNS: This domain is provided by manufacturer.

Third Party DDNS: This domain is provided by the 3rd party, such as DynDNS, Oray, 3322 etc.



Third Party DDNS

If you use third party DDNS, please choose the server you use, such as "3322.org" or "dyndns.org" as below:



DDNS Service Settings	
Manufacturer's DDNS	
Manufacturer's Domain	e0254.aipcam.com
Third Party DDNS	
DDNS Service	3322.org(dyndns) ▼
DDNS User	ipcamdemo
DDNS Password	•••••
DDNS Host	ipcamdemo.3322.org
<input type="button" value="Submit"/> <input type="button" value="Refresh"/>	

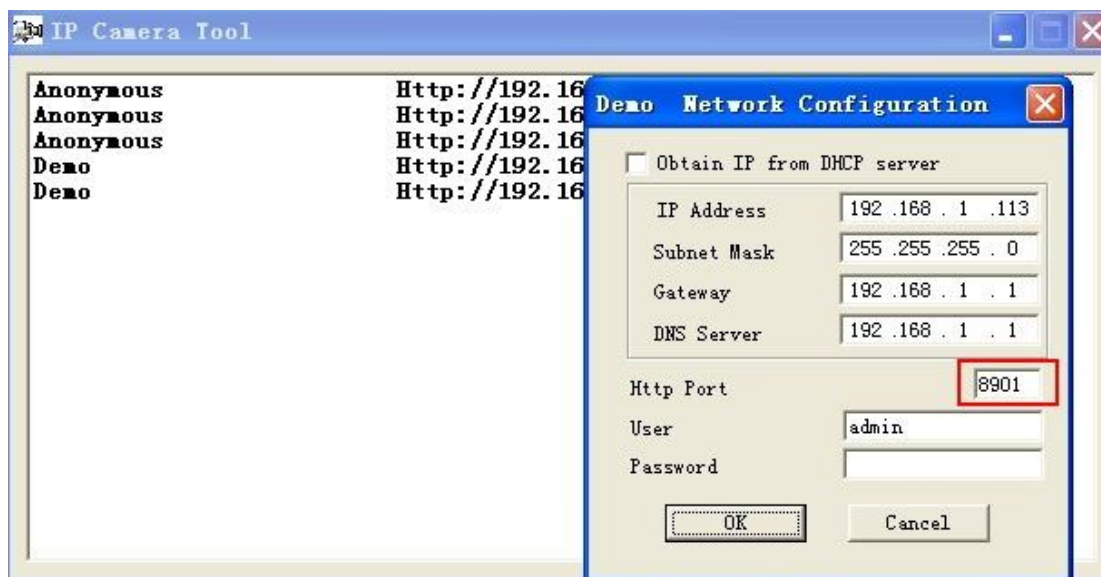
You have to register an account firstly, keep the user, password, host, then fill in it.

Note: Only one DDNS can be chosen, for example, if you use manufacturer's DDNS, the 3rd one won't work, if use the 3rd DDNS, the manufacturer's one won't work.

3. Change the camera's port.

The default port of camera is "80", please change "80" to any other one you like, such as "81", "100", "8091" etc.

Click "OK", the camera will reboot, wait about 30 seconds.



The screenshot shows the 'IP Camera Tool' window with a list of camera addresses (Anonymous, Demo) and their corresponding HTTP URLs (Http://192.168.1.113). Overlaid on this is the 'Demo Network Configuration' dialog box. The dialog has a checkbox for 'Obtain IP from DHCP server' which is unchecked. Below this are fields for IP Address (192.168.1.113), Subnet Mask (255.255.255.0), Gateway (192.168.1.1), and DNS Server (192.168.1.1). The 'Http Port' field is highlighted with a red box and contains the value '8901'. There are also fields for 'User' (admin) and 'Password' (empty), and 'OK' and 'Cancel' buttons at the bottom.

Make sure the "Subnet Mask", "Gateway", "DNS Server" is the same as your router.

4. Set Port Forwarding in the router.

This is the most important step. Set port forwarding in router refer to the IP of your camera correctly, then the DDNS will work. Because there are so many kinds of routers from all over the world, so it's difficult to show a fix steps, but there are some samples of different routers' port forwarding settings as below, just for reference:

TP-LINK:

(1) Login the router.



(2) Choose “Forwarding”, select “Virtual Servers”

(3) Click the Add New button, pop-up below:

Add or Modify a Virtual Server Entry

Service Port: (00X-XX or XX)

IP Address:

Protocol:

Status:

Common Service Port:

Fill the service port (**except 80**), IP address of the camera, then click Save
The port and IP address should be the same as Camera.

BELKIN:

(1) Login the router.

(2) Choose “Firewall”, select “Virtual Servers”

(3) Input the port (**except 80**) and IP address, then click save.

Note: The port and IP address should be the same as Camera.

BELKIN Router Setup
 Home | Help | Logout | Internet

LAN Setup
 LAN Settings
 DHCP Client List
 Static Routing
Internet WAN
 Connection Type
 DNS
 MAC Address Cloning
Wireless
 Channel and SSID
 Security
 Wi-Fi Protected Setup
 Guest Access
 Use as Access Point
QoS
 QoS Profiles
 Traffic Statistics
Firewall
 Virtual Servers
 MAC Address Filtering
 Access Control
 DMZ
 DDNS
 WAN Ping Blocking
 Security Log
Utilities
 Restart Router
 Restore Factory Defaults
 Save/Backup Settings
 Restore Previous Settings
 Firmware Update
 System Settings

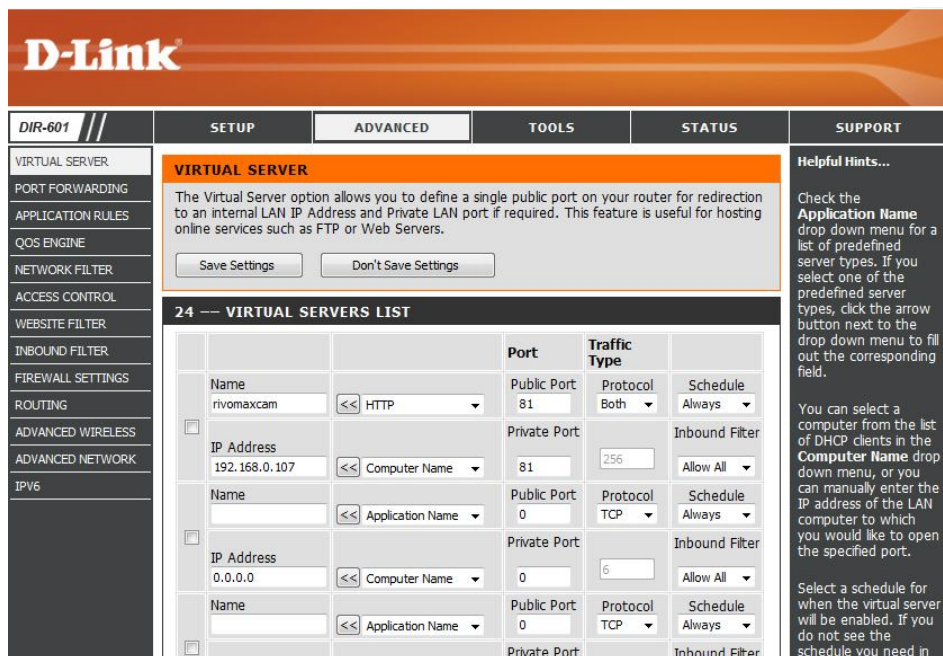
Firewall > Virtual Servers
 This function will allow you to route external (Internet) calls for services such as a web server (port 80), FTP server (Port 21), or other applications through your Router to your internal network. [More Info](#)
 Add:
 Clear entry:

	Enable	Description	Inbound port	Type	Private IP address	Private port
1	<input checked="" type="checkbox"/>	IPCAM	101	BOTH	192.168.2.56	101
2	<input type="checkbox"/>			BOTH	192.168.2.	
3	<input type="checkbox"/>			BOTH	192.168.2.	
4	<input type="checkbox"/>			BOTH	192.168.2.	
5	<input type="checkbox"/>			BOTH	192.168.2.	
6	<input type="checkbox"/>			BOTH	192.168.2.	
7	<input type="checkbox"/>			BOTH	192.168.2.	
8	<input type="checkbox"/>			BOTH	192.168.2.	
9	<input type="checkbox"/>			BOTH	192.168.2.	
10	<input type="checkbox"/>			BOTH	192.168.2.	

DLINK:

- (1) Login the router.
- (2) Choose **"Advanced"**, select **"Virtual Servers"**
- (3) Input the port, IP address, Protocol, then click save.

Note: The **"public port"** & **"private port"** should be the same as camera's port, choose the protocol to be **"both"**.



D-Link

DIR-601

SETUP ADVANCED TOOLS STATUS SUPPORT

VIRTUAL SERVER

The Virtual Server option allows you to define a single public port on your router for redirection to an internal LAN IP Address and Private LAN port if required. This feature is useful for hosting online services such as FTP or Web Servers.

Save Settings Don't Save Settings

24 --- VIRTUAL SERVERS LIST

Name	Application Name	Public Port	Private Port	Protocol	Schedule	Inbound Filter
rivomaxcam	HTTP	81	81	Both	Always	Allow All
IP Address: 192.168.0.107	Computer Name	0	0	TCP	Always	Allow All
IP Address: 0.0.0.0	Computer Name	0	0	TCP	Always	Allow All

Helpful Hints...

Check the **Application Name** drop down menu for a list of predefined server types. If you select one of the predefined server types, click the arrow button next to the drop down menu to fill out the corresponding field.

You can select a computer from the list of DHCP clients in the **Computer Name** drop down menu, or you can manually enter the IP address of the LAN computer to which you would like to open the specified port.

Select a schedule for when the virtual server will be enabled. If you do not see the schedule you need in

After all these 4 steps done, then you can use the DDNS freely, check the DDNS status from the camera as below, and get the link of DDNS for internet view.

Step: **"Login">"System">"Device Info"**:



Live Video play stop snapshot record audio talk

Multi-Device

Net work

Audio video

system

other


Rate Full-Speed

resolution 320*240

Device Status

Device ID	000000256796
Device Firmware Version	17.22.2.26
Device Embedded Web UI Version	20.8.1.37
Alias	Test
Alarm Status	None
DDNS Status	3322 Succeed http://jerryjwb.3322.org:128
UPnP Status	UPnP Succeed

Refresh



Network Camera

Live Video play stop snapshot record audio talk

Multi-Device

Net work

Audio video

system

other

Rate Full-Speed

resolution 640*480

Device Status

Device ID	000DCSD008FA
Device Firmware Version	17.22.2.26
Device Embedded Web UI Version	20.8.4.23
Alias	Demo
Alarm Status	None
DDNS Status	aipcam.com Succeed http://e0254.aipcam.com:8901
UPnP Status	UPnP Succeed

Refresh

Q4: How to know the WAN IP of the device.

1. From internet.

If you want to know the WAN IP of your device, please go to

<http://www.whatismyip.com>. You will find the current WAN IP of your device.



2. From router.

You can also get the WAN IP address from your router.

Q5: How to register a third party DDNS account

For example, you can go to DynDNS website to register a free account.

<http://www.dyndns.org> / <http://www.dyndns.com>.

1. Click **Sign up FREE**.



2. Choose **Sign Up** under **FREE**.

Most Popular	DynDNS Pro	DynDNS Custom
DynDNS Free	\$15/yr	\$29⁹⁵/yr
Get a free domain name	Up to 30 Pro domain names	DNS hosting for yourdomain.com
Update monthly to avoid expiration	Never expires, just works	Branded URL-shortening with WebHop
Use with Windows, OSX, routers & more	...also works with TSIG clients	..also works with Apple AirPort & Bonjour
Free email and community support	Access to phone technical support	Access to phone technical support
Sign Up	Sign Up	Sign Up

3. Do the follow steps:

My Account

My Services

- Dynamic DNS Pro
- Internet Guide
- SLA
- Premier Support
- Zone Level Services
- Domain registration and transfer, DNS hosting, MailHop services
- Host Services
- Dynamic DNS hosts, WebHop URL Forwarding
- Dynect SMB
- MailHop Outbound
- SSL Certificates
- Renew Services
- Auto Renew Settings
- Sync Expirations
- Account Settings
- Billing

Add New Hostname [↑ Host Services](#)

You don't currently have a [Dynamic DNS Pro service](#) in your account.

To get the full benefits of Dynamic DNS, including premium subscriber domains and other features, [add Dynamic DNS Pro to your shopping cart](#) (or try it with \$1.99 [monthly subscription](#)).

Fill in a name you want **Choose dyndns.org here**

Hostname:

Wildcard: ☐ create "*.host.dyndns-yourdomain.com" alias (for example to use same settings for www.host.dyndns-yourdomain.com)

Service Type: ☒ Host with IP address ☐ WebHop Redirect (URL forwarding service) ☐ Offline Hostname

IP Address: [Click here to get the IP address](#)

[Your current location's IP address is 183.16.183.45](#)

TTL value is 60 seconds. [Edit TTL...](#)

My Cart

0 items

WE'RE HIRING

Powered by **Dyn**

Mail Routing: ☐ I have mail server with another name and would like to add MX hostname...

What do you want to use this host for?

Select services and devices you would like to use with this hostname.

Work From Home Office or VPN:

vpn remote file access remote desktop mail server web server

chat server ftp backup ssh database voip

Hosting and Design For Web Sites and Blogs:

blog gallery wiki portfolio ecommerce web page

Remote Access For Devices:

dvr webcam data storage cctv printer alarm and security

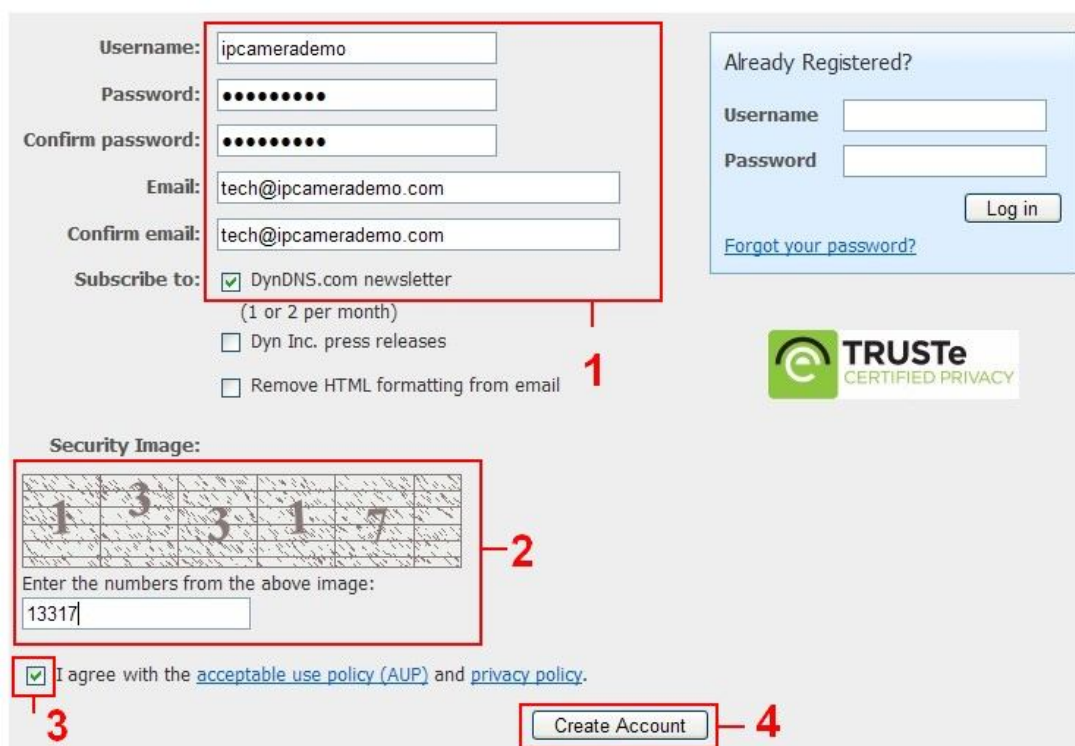
thermostat weather station game server home automation

Add To Cart

Then choose **Add to Cart**.

4. Set the username and password as below:

Create account or log in to continue:



The screenshot shows the Apexis account creation interface. A red box labeled '1' encloses the registration fields: Username (ipcamerademo), Password (masked with dots), Confirm password (masked with dots), Email (tech@ipcamerademo.com), Confirm email (tech@ipcamerademo.com), and a checked checkbox for 'DynDNS.com newsletter'. Below these are unchecked checkboxes for 'Dyn Inc. press releases' and 'Remove HTML formatting from email'. To the right is a 'Log in' section for already registered users. A 'Security Image' section labeled '2' contains a 5x5 grid of numbers (1, 3, 3, 1, 7) and an input field with '13317'. A checkbox labeled '3' is checked for agreement with the AUP and privacy policy. A 'Create Account' button is labeled '4'.

After these settings have been done, it will send an email to your mailbox to active this account.

5. Please login your email box, and open the active link you get by email, then it will go to the activate page to get this account active.

You will get all the details of your DDNS, such as hostname, WAN IP address etc.

Thanks for your support and attention, for further operation details, please check the full version user manual of our IP Cameras!